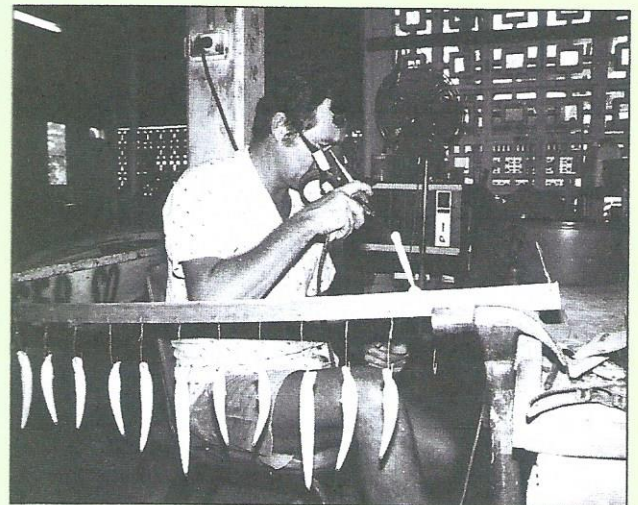




D.I.Y. HAND CRAFTED MINNOWS

LEFT: North Queensland cottage industry lure maker, Norm Edwards, at his work bench carving hand-made minnow lures. Norm starts with a timber blank and uses a hobby knife to form the basic minnow shape before finishing off with a file, followed by various grades of sandpaper. The eyelets in the lure are formed from lengths of single strand stainless steel wire which are inserted and glued into deeply drilled holes.

BELOW LEFT: Even the home handyman will benefit greatly from establishing a mini-production line when making lures. This way, a dozen or so lures can be handled at each stage of production, speeding up the process and maintaining uniformity.



ABOVE RIGHT: Norm painting a batch of his home-made minnow lures using an airbrush of the kind available through many hobby and art supply outlets. Norm applies an all-over base coat first, then builds up his chosen colour scheme in a series of layers. Simple masking devices such as sheets of tin with shapes cut in them can be used to add stripes, bars and other patterns, while a scrap of fly wire is perfect for creating a scale pattern effect. Note that Norm is wearing a mask to prevent inhalation of paint and fumes; this is essential to prevent injury when working in enclosed areas.

RIGHT: Four phases of the manufacture of Norm's minnow lures: At top left the roughly formed timber blank with the slot for the swimming lip or bib in place. Bottom left shows another rough blank and the eyelets and sheet metal bib. At top right is a fully shaped minnow with the bib and eyelets glued securely in place, while the final step — at the bottom right of the photo — shows the finished product; painted and with the hooks and split rings fitted. A lure like this is a valuable addition to any angler's tackle box, and will take a wide range of fresh and saltwater species.

